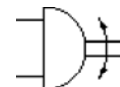


semi-rotary drive

DSR-16-180-P

Part number: 11910

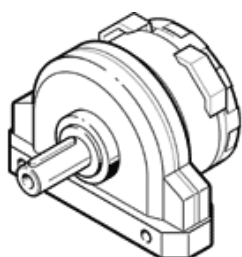
Classic

FESTO

Rotary vane principle, infinitely adjustable swivel angle. The stop system is separate from the rotary vane so that any forces which occur are absorbed by the stop cams and cushioned via flexible plastic pads.

Modern alternatives can be found by entering the first four characters of the type code in the search field.

[PDF](#) General operating conditions

[PDF](#) Data sheet


Data sheet

Feature	Value
Size	16
Cushioning angle	2.1 deg
Rotation angle adjustment range	0 ... 180 deg
Swivel angle	0 ... 180 deg
Cushioning	P: Flexible cushioning rings/plates at both ends
Assembly position	Any
Mode of operation	double-acting
Design structure	Rotary vane
Position detection	No
Operating pressure	2 ... 8 bar
Max. swivel frequency at 6 bar	3 Hz
Operating medium	Compressed air in accordance with ISO8573-1:2010 [7:-:-]
Ambient temperature	-10 ... 60 °C
Theoretical torque at 6 bar	2 Nm
Product weight	300 g
Mounting type	with through hole
Pneumatic connection	M5
Material of drive shaft	Steel Nickel plated
Material seals	NBR